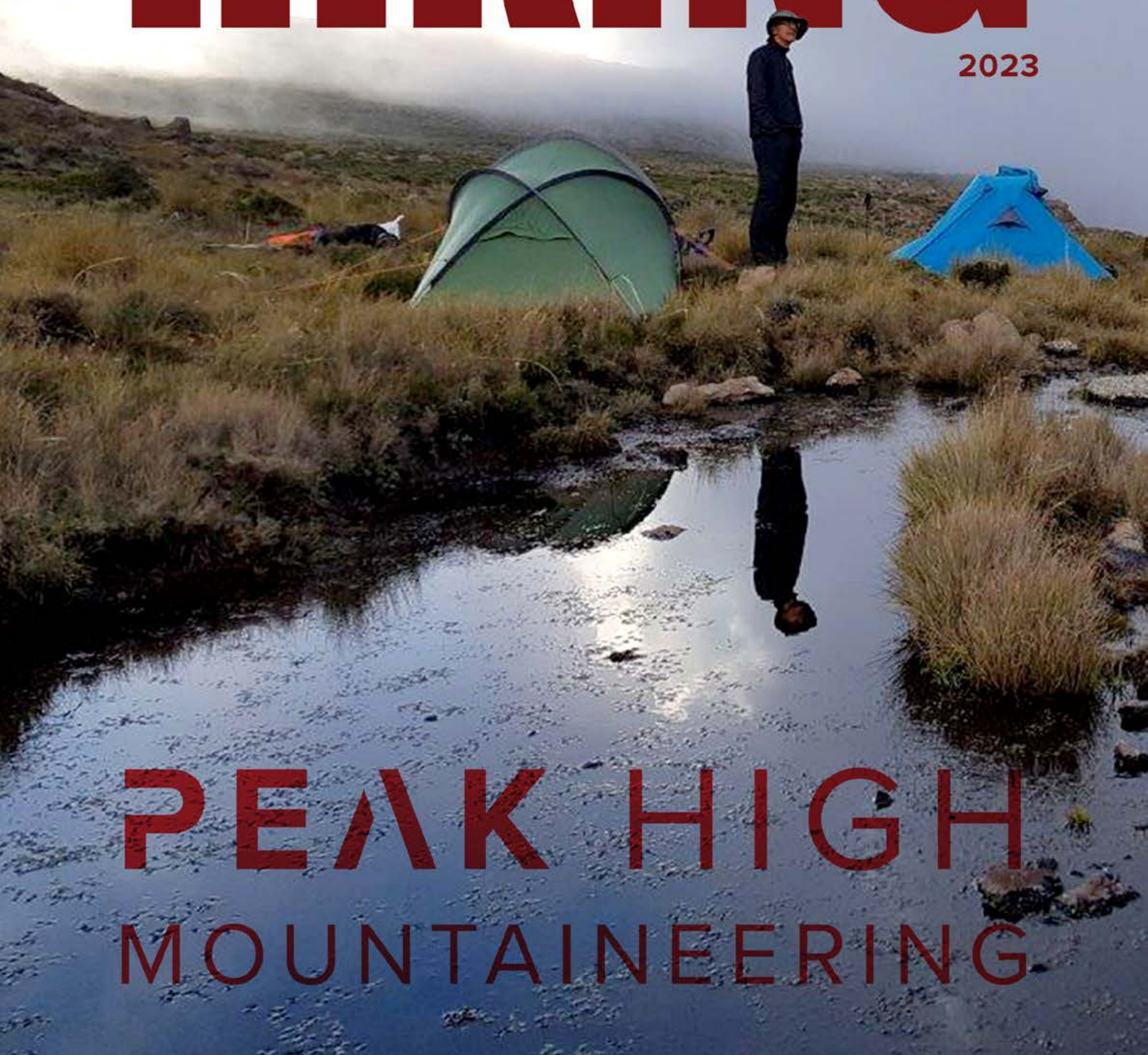


PEAKHIGH.CO.ZA

# ULTIMATE HIKING

2023



PEAK HIGH  
MOUNTAINEERING



# CONTENTS

---

## 4 Gloves and Gaiters

Lightweight Gloves - Midweight Gloves - Alpine Gloves - Gaiters

## 9 Kitchen

Stoves - Fuel - Stands - Cookware - Eatware - Coffee

## 22 Lighting

Headlamps - Lanterns - Accessories

## 26 Packing and Luggage

Backpacks - Dry Bags

## 29 Shelter and Sleep

Sleeping Bags - Mats - Pillows - Tents - Bivis - Footprint

## 39 Trekking Poles

Z-Poles - Cork Poles - Carbon Poles



**Gavin Raubenheimer**

Gavin is the owner & operator of Peak High Mountaineering. He is a certified Mountaineering Instructor (M.I.A.) endorsed by the Mountain Development Trust of SA. He is a NQF National Mountaineering (level 7), Cultural and Nature Guide (level 4). Gavin is a past President of the KwaZulu-Natal Section of the Mountain Club of SA. He has been involved in mountain rescue since 1992 and since 2005 has been the Convener of Mountain Rescue in the province. Want Gavin and his team at Peak High to guide you on a hike? Put yourself in the hands of the certified and experienced experts in mountain hiking, guiding and climbing.

Visit: [peakhigh.co.za](http://peakhigh.co.za) for more information about hiking trails and guides.



Lightweight Gloves

Midweight Gloves

Alpine Gloves

Gaiters



### FrontPoint Gaiter

Scarpa

Designed to keep out ice and moisture while ice climbing, the Black Diamond Frontpoint features a full-height design with a two-layer waterproof breathable GORE-TEX upper and ballistic nylon lower. The narrow fit keeps the gaiter streamlined around ice boots, and the neoprene-coated instep strap keeps it securely fitted while climbing.

#### Features:

Seam-taped, two-layer GORE-TEX upper and Ballistic nylon lower  
Drawstring with cordlock upper closure  
Hook-and-loop front closure with snap

Nickel-plated instep-adjustment buckle  
High-density, neoprene-coated nylon instep strap  
Narrow tailoring for tight fit around ice climbing boots  
Weight: 251 g (8.9 oz)



### Glissade Gloves

BD

Alpine-worthy protection with a versatile design, the Glissade is BDs best. Built with a 100% waterproof BD.dry™ insert, an Empel DWR on the shell, and a quick-cinching gauntlet cuff, the Glissade fends off spindrift, slush, and sleet. A fleece liner and Thinsulate® insulation keeps cold temps at bay while the reinforced goat leather palm holds up to extended all-mountain use.

#### Features:

100% waterproof BD.dry™ insert  
Lightweight, abrasion-resistant, Pertex Shield® shell with four-way stretch  
Lining features 100g Thinsulate® insulation palm and back of hand

Fixed 100 g fleece lining  
Goat leather palm with Kevlar® stitching  
Temp Range -20/-1 °C (-5/30 °F)  
Weight Per Pair 161.2 g (5.69 oz)





### LightWeight Fleece Gloves

**BD**

The Black Diamond LightWeight Fleece gloves provide the perfect amount of warmth for ski tours, trail runs and any fast-paced outings in chilly conditions. Doubling as a liner for added warmth under a shell, the lightweight fleece fabric is highly breathable and dries in a flash, plus they've added digital material on the thumbs and index fingers for gloves-on touchscreen functionality.

#### Features:

136 g Polartec® Micro fleece

Digital thumb and index finger allow for gloves-on touchscreen use

Temp Range 4/13 °C (40/55 °F)

Weight Per Pair 28 g (1 oz)



### LightWeight WoolTech Gloves

**BD**

The Black Diamond LightWeight WoolTech gloves offer lightweight and stretchy protection during ski tours, trail runs and other high-output pursuits. The highly breathable fabric neutralizes odor and insulates even when wet, and with a low-profile design, they double as added protection under a shell. Digital material on the thumbs and index fingers allows for gloves-on touchscreen functionality.

#### Features:

160 g NuYarn merino Wool for balance of warmth and durability

47% Merino, Wool/47%, Polyester/6%, Nylon

NuYarn merino wool blend is lighter, stronger, and dries five times faster

Digital thumb and index finger allow for gloves-on touchscreen use

Temp Range 4/13 °C (40/55 °F)

Weight Per Pair 28 g (1 oz)



### MidWeight Softshell Gloves

**BD**

Built with durable, stretchy and weather-resistant softshell fabric for high-output pursuits in mild conditions, the gloves offer dynamic, breathable protection while ski touring, climbing or backpacking. The full goat leather palms and fingers offer a secure grip on poles or tools and feature digital material on the thumbs and index fingers allow for gloves-on touchscreen functionality. Comfortable, fleece-lined neoprene cuffs seal out the elements and make for easy on and off.

#### Features:

Four-way stretch softshell fabric with DWR treatment

Digital thumb and index finger allow for gloves-on touchscreen use

Full goat leather palm

60 g PrimaLoft® Gold Insulation on back of hand

Neoprene and fleece cuff

Reflective logo

Temp Range -2/6 °C (28/42 °F)

Weight Per Pair 92 g (3.3 oz)



### Mont Blanc Gloves

**BD**

Inspired by the legendary Ultra-Trail du Mont Blanc race, the BD Mont Blanc Gloves are designed to shed light weather and breathe efficiently during ultra-races and other high-output alpine endeavors. The lightweight stretch fabric features a weather-resistant finish protects against foul conditions, and the textured grip palm provides a firm grasp on trekking poles, bottles and other essentials. The Mont Blanc also features digital fingertips that allow you to use your phone without baring your skin to the cold.

#### Features:

Weather-resistant stretch shell

Breathable stretch palm with patterned silicone grip

Digital fingertips for gloves-on touchscreen functionality

Low-profile stretch cuff

Temp Range -4/4 °C (25/40 °F)

Weight Per Pair 56 g (1.98 oz)





## Soloist Gloves

**BD**

The go-to glove for technical alpine adventures in cold weather, the BD Soloist glove combines a BD.dry™ waterproof insert with an Empel DWR on the shell and a long gauntlet cuff for complete weather protection. The shell can be used alone on warmer days, while the insulated liner, filled with PrimaLoft Gold Cross Core, dries quickly, and insulates even when wet. The reinforced goat leather palm stands up to rocky terrain, repeated rope handling and the wear and tear associated with dedicated mountain use.

### Features:

GTT Empel DWR—A revolutionary PFC-free water repellent finish that is superior in performance and durability

100% waterproof BD.dry™ insert

Durable but lightweight, 100% recycled shell fabrics with stretch for the freedom to move

Removable liner features 170 g PrimaLoft Gold

Insulation with Cross Core on back of hand and 133 g PrimaLoft Gold with Grip Control on the palm while the soft, recycled fleece lining maximizes warmth and dexterity

Goat leather palm with reinforcement patch

Temp Range -29/-9 °C (-20/15 °F)

Weight Per Pair 261.4 g (9.22 oz)

## KITCHEN

Stoves

Fuel

Stands

Cookware

Eatware

Coffee





### Force Cooking Stove

**Fire Maple**

Compact lightweight stove.

#### Features:

Suitable for high mountain use.

It can withstand a strong wind by the baffle on the burner top.

It is brief and steady in design of structure and folding way, more steady after changed supporting style.

Flat and small burner top provide a strong straight flamer.



### Fleet Cooking Stove

**Fire Maple**

The Fire Maple FIRE-FLEET is a compact folding gas stove which has an output of 10202 btu (2990w) that is connected to the pre-heating gas generator tube , continues onto to the flexible fuel line before it connects or is attached to the gas canister. It boasts a large burner head for larger/better heat distribution on larger pots.

#### Features:

Lower pot-holders for more stability

Folding wide pot support arms and legs

Pre-heat generator tube

Large angled burner head for even heat distribution

Flexible fuel line provides lower centre of gravity for extra stability

Mesh protection carry bag

Uses Propane / Butane gas canisters (sold separately)

Weight: 146g



### Fold Stand

**Fire Maple**

The Fire Maple Fire-Fold is a folding gas stove stabilizer leg stand. It fits most 230g & 450g gas canisters (G2/3/5 canisters) and helps to stabilize stoves whilst stirring the contents inside your pot.

#### Features:

Lightweight gas stove stabilizer, provides stable secure base for gas stoves

Fits 100g & 230g gas cylinders

Size: Ø 215mm unfolded

Weight: 30g



### Fuel Bottle - 500ml

**Fire Maple**

The Fire Maple Fire Fuel is a 500ml Fuel Bottle that is designed for carrying fuel safely. With its thickened wall design it does not break or deform easily.

#### Features:

Aluminum alloy material, lightweight and free from rust

With anti-corrosion coating that does not fade

Leakproof design in cap

Volume: 750ml

Size: Ø72 x 250mm

Weight: 158g



### Fuel Turbine Stove

**Fire Maple**

Fire Maple Fire Stove designed for cooking on the go with liquid gas for extended use. Robust and lightweight, this stovetop is an easy choice for experienced hikers.

#### Features:

Open: 178 x 84mm

Folded: 80 x 84.5mm

Max Output Power: 3500W

Weight: 180g(Stove), 48g(Pump), 91g(550ml Fuel Bottle)

Boiling 1L water only takes 3'50"



### Windscreen 2

**Fire Maple**

The Fire Maple Windscreen 2 provides simple, lightweight wind protection for your stove. At 21cm in height, it protects all FireMaple stoves, including those which are attached on top of gas canisters.

#### Features:

Made out of Aluminium

Size: 210 x 750mm

Weight: 95g



**Feast K2 - 1.5L**

**JETBOIL**

The Fire Maple Fire FRESH 1.5lt. Pot and lid is constructed of hardened anodised aluminium which includes heat exchanger fins to increase performance which saves cooking time (up to 30%) and reduces gas consumption.

**Features:**

- Heat exchanger
- Foldable locking handles that can lock into place, press down to release.
- Hard Anodized Aluminium Pot
- Straining hole in the lid
- 2 x Small mug/bowls, spoon & cleaning scourers
- 250ml Measurement indicators
- Mesh storage bag
- Weight: 338g
- Pot Dimensions: Size: Ø 168x111mm
- Volume: 1.5L



**Fly 1L Pot**

**JETBOIL**

The Fire Maple Fire-Fly Pot contains a 1lt. Pot and lid. This hardened anodised aluminium constructed pot includes heat exchanger fins to increase performance which saves cooking time (up to 30%) and reduces gas consumption.

**Features:**

- Folding non slip handle
- Hard Anodized Aluminium Pot with a silicone lid
- 250ml Measurement indicators
- Mesh storage bag
- Insulated handles
- Weight: 240g
- Pot Dimensions: Size: Ø 36cm
- Volume: 1L



**MiniMo Cooking System**

**JETBOIL**

Powered by FluxRing technology, the MiniMo reaches a rolling boil in just over two minutes with half the fuel consumption of traditional systems. Jetboil's proprietary regulator technology offers incremental heat adjustments from light simmer to full boil, perfect for sautéing greens, simmering sauces, and more.

**Features:**

- Jetboil's proprietary regulator technology offers incremental heat adjustments from light simmer to full boil, perfect for sautéing greens, simmering sauces, and more
- Metal handles and redesigned FluxRing cooking cup optimized for a low spoon angle are perfect for personal cooking and eating
- Convenient and reliable pushbutton igniter starts heating instantly and clever sideways burner storage design saves pack space
- Weights: 414g (14.6oz)



**Flash Cooking System**

**JETBOIL**

Blistering boil times come standard on the Flash personal cooking system, the ultimate camping stove for preparing coffee, soup, or dehydrated meals on the trail. Optimized for efficiency, the Flash boils water in a lightning-quick 100 seconds, making it the fastest Jetboil ever. Jetboil's 1-liter FluxRing cooking cup with insulating cozy makes boiling water—and keeping it warm—a breeze.

**Features:**

- Boils water in a lightning-quick 100 seconds
- Convenient, reliable pushbutton igniter starts heating instantly, and thermochromatic color-change heat indicator lets you know when water's ready
- Includes fuel canister stabilizer; bottom cup doubles as a measuring cup and a bowl; easy to pack and carry at only 13.1 ounces
- One-year limited warranty
- Weight 0.818 lb | 0.371 kg
- Power 9000 BTU/h / 2.6 kW
- Volume 1 Liter Tall

### SUMO Cooking System

**JETBOIL**



The SUMO packs the same regulator control as other Jetboil-regulated cooking systems, but with a higher-capacity cup-to-fuel cooking ratio for you and your friends. Jetboil's large 1.8-liter FluxRing cooking cup with insulating cozy is the ideal cooking vessel for groups. Jetboil's proprietary regulator technology offers incremental heat adjustments from light simmer to full boil, perfect for sautéing greens, simmering sauces, and more.

#### Features:

Convenient and reliable pushbutton igniter allows for consistent performance down to 20 degrees F (-6 degrees C)

Ability to store 100-gram or 230-gram Jetpower fuel can with burner, fuel canister stabilizer, and pot support for expanded meal options on the trail; weighs 16 ounces.

Able to store a 100 g or 230 g Jetpower fuel can with Burner, Fuel Canister Stabilizer and accessory Pot Support

Fuel Canister Stabilizer included

Compatible accessories

Pot support included

Jetpower Fuel sold separately

Weight 1 lb | 0.453 kg

System weight excludes fuel stabilizer

Power 6000 BTU/h / 1.75 kW

Volume 1.8 Liter

### Zip Cooking System

**JETBOIL**



A tried-and-true classic, the Zip personal cooking system is a reliable, no-frills option for backpackers who want a stowable, efficient, and affordable camping stove. Powered by FluxRing technology, the Zip's easy-to-use cooking system boils water in just over two minutes with half the fuel consumption of traditional systems.

#### Features:

Easy-to-use cooking system boils water in just over two minutes with half the fuel consumption of traditional systems

0.8-liter FluxRing cooking cup with insulating cozy makes boiling water—and keeping it warm—a breeze

Bottom cover doubles as a measuring cup and a bowl to save space in your pack for clothes, gear, and food

Compatible Jetboil accessories, such as a coffee press, hanging kit, pot support, skillet, FluxRing cooking pot, and utensils make this a necessity for your next backpacking adventure

Fuel canister stabilizer and drink-through lid with pour spout and strainer included; easy to pack and carry at only 12 ounces

Fuel Canister Stabilizer included

One-year limited warranty



### JetPower Fuel 1 Pack - 100g + 230g

**JETBOIL**



Formulated for maximum efficiency and minimum consumption, Jetboil's high-performance propane/isobutane four-season fuel delivers higher vapor pressure for improved performance in cold weather. This 100g Jetboil JetPower Fuel can is easily packable and will fuel you through your next adventure.

#### Features:

FUEL CAPACITY: 100 g (approx. 12 liters of boiled water)

Weight 0.4375 lb | 0.199 kg

Dimensions 3.5 in x 2.8 in (9 cm x 7.11 cm)

Compatible With SUMO, Stash, Flash, MiniMo, MicroMo, MightyMo, Zip, Joule

### Pot Support

**JETBOIL**



Safely use your cookware on a stove with the Jetboil Pot Support. The support attaches to most Jetboil burners to accommodate Jetboil's skillet, 1.5L FluxRing cooking pot, or a variety of traditional pots and pans. Securely lock the support to the burner base with the flanges, which fold easily for storage inside Jetboil system cups.

#### Features:

The support attaches to most Jetboil burners to accommodate Jetboil's skillet, 1.5L FluxRing cooking pot, or a variety of traditional pots and pans

Folds easily for storage inside Jetboil system cups

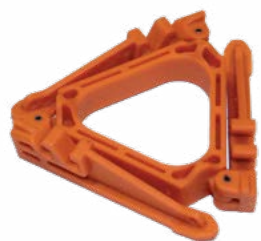
Compatible with all Jetboil systems except the Genesis, HalfGen, Stash and MightyMo

Weight 0.075 lb | 0.035 kg

Dimensions 3.5 in x 1.25 in (9 cm x 3.18 cm)

Compatible With SUMO, Flash, MicroMo, MiniMo, Zip, Luna





### Fuel Can Stabilizer

**JETBOIL**

Steady your cook stove on uneven surfaces with the Jetboil Fuel Stabilizer. The stabilizer attaches to the bottom of Jetboil canisters to provide adjustable support on rocks, dirt, or other bumpy surfaces. An easy-to-pack design includes folding legs, so you can store the support inside your cook stove system.

#### Features:

Weight 0.05625 lb | 0.027 kg

Dimensions 7.5 in x 0.75 in (19 cm x 1.9 cm)

Compatible With SUMO, Flash, Luna, MicroMo, MightyMo, MiniMo, Zip



### Halulite Boiler - 1.1L

**GSI**

The perfect, packable pot, pure and simple. This boiler is simple, efficient and incredibly strong, the perfect combination for alpinists, fast-packers and long distance bike tourers. A folding handle locks into place while you're cooking and then folds up for compact storage.

#### Features:

Weight: 0.54 lb

Material: Hard Anodized Aluminum

Includes: Boiler, Lid, Mesh Stuff Sack



### Halulite Boiler - 1.8L

**GSI**

The perfect, packable pot, pure and simple. This boiler is simple, efficient and incredibly strong, the perfect combination for alpinists, fast-packers and long distance bike tourers. A folding handle locks into place while you're cooking and then folds up for compact storage.

#### Features:

Weight: 0.86 lb

Material: Hard Anodized Aluminum

Includes: Boiler, Lid, Mesh Stuff Sack



### Halulite Tea Kettle

**GSI**

Includes: Every set includes a 2 pots, a frypan, 2 nylon strainer lids, cutting board, a folding handle, and stuff/sink sack

Weight: 0.44 lb



### Bugaboo Base Camper Cookset

**GSI**

Premium performance at an exceptional value. A compact and versatile non-stick cook set for family or base camping, the Bugaboo Base Camper offers premium performance at an exceptional value. The pot and lid combo are perfect for stovetop use. Every set includes a 2 pots, a frypan, 2 nylon strainer lids, a dished cutting board for a variety of prep duties, a folding pot handle, and a welded stuff sack to keep everything organized and doubles as a sink for washing.

#### Features:

Small model: Measures 8.2 x 8.2 x 5.4 inches, weighs 2 pounds, 7 ounces, pots and pan size: 2L and 1.5 L Pot, 8" Fry Pan

Medium model: Measures 9.1 x 9.1 x 5.4 inches, weighs 2 pounds, 10 ounces, pots and pan size: 3L and 2 L Pot, 8" Fry Pan

Large model: Measures 10 x 10 x 6 inches, weighs 3 pounds, 4 ounces, pots and pan size: 5 L and 3 L Pot, 9" Fry Pan

Weights: 1193g (2.63 lb)

Material: Non-Stick Coated Aluminum, Nylon 6-6, Silicone



### Pinnacle Soloist II Cookset

**GSI**

Superlight and really compact, the Pinnacle Soloist delivers serious performance and sneaks everything you need for cooking and cleaning, eating and drinking into an insanely light 10.9 oz. (309 g) package that's about the size of a grapefruit – and there's even room for your stove and a 220g fuel canister(not included).

#### Features:

Weight: 0.68 lb

Material: Non-Stick Coated, Hard Anodized Aluminum, Clear Polypropylene, Nylon 6-6

Includes: 1.1L pot, a mug/bowl hybrid with insulated sleeve, folding Foon, storage sack/sink combo.





### Bugaboo Base Camper Cookset **GSI**

Built for maximum cooking efficiency, and designed to carry light and pack small, this is our highest performance two-person backpacking system. The pot's strainer lid makes draining easy, and the whole system fits into a carry bag that doubles as a camp sink.

#### Features:

Weight: 1.44 lb

Material: Non-Stick Coated, Hard Anodized Aluminum, PP, Nylon, Silicone, Aluminum, Stainless Steel

Major Dimension: 1.9 qt.

Includes: 1.8 L Pot, Strainer Lid, 2 20 fl. oz. Mugs w/ Insulated Sleeves, two 20 fl. oz. Bowls, 2 Sip-It Tops, 2 Folding Foons, Welded Sink

Dimensions: 6.2 in x 5.8 in x 5.9 in

Durable, scratch-resistant PFOA-free Teflon



### Outdoors Essential Spoon **GSI**

New! Long-handle spoon gives you further reach and the Silicone edge allows you to scoop and scrape with ease.

#### Features:

Major Dimension: 25.15cm / 9.9"

Weight: 29g / 1 oz.

Dimensions: 25.15cm x 5 x 1.8cm / 9.9" x 2.0" x 0.7"

Material: Nylon and Silicone

Product Use: Ultralight Backpacking, Gourmet Backpacking, Car Camping, Day Use

INCLUDES: Silicone-Tipped, Nylon Spoon



### Glacier Stainless 3 pc. Ring Cutlery **GSI**

Simple-yet-sturdy Glacier Stainless 3 pc. Ring Set offers a bomb proof set of camp-ready utensils that will last for generations.

#### Features:

Weight: 0.21 lb

Material: Stainless Steel

Major Dimension: 3 piece

Includes: Spoon, Fork, Knife, Lanyard

Dimensions: 6.3 in x 1.4 in x 1.2



### 3 Pc. Ring Cutlery Set **GSI**

Rugged, full-size, classic 3 pc. Ring Cutlery Set

#### Features:

Weight: 0.08 lb

Material: Acetal

Major Dimension: 7.9 inch

Includes: Spoon, Fork, Knife, Cutlery Ring



### Cascadian Mug **GSI**

Light, tough, and totally recyclable, the GSI Cascadian Mug is your go-to, all-purpose camp mug. This durable, BPA-Free mug won't hold odors or impart any tastes on tomorrow's dinner.

#### Features:

Weight: 0.16 lb

Material: Polypropylene

Major Dimension: 14 fl. oz.

Includes: 14 fl. oz. Mug

Dimensions: 4.7 in x 3.6 in x 3.6





## Infinity Backpacker Mug

GSI

Our favorite mug, now in the GSI Eco line, leads the way when it comes to materials and manufacturing. Made from BPA-free, non-leaching polypropylene and wrapped in a recycled plastic (rPET) cloth. The insulated sleeve, non-slip footing, and sealable sip through lid keep the contents warm (or cold) and free from spills, trail dust, and critters. A sturdy webbing handle gives a great grip and collapses flush for compact storage in your pack.

### Features:

Weight: 0.22 lb

Material: Clear Polypropylene, rPET cloth, Foam

Major Dimension: 17 fl. oz.

Includes: 17 fl. oz. Mug, Sealable Sip-It Top, Insulated Sleeve w/ Handle

Dimensions: 4 in x 3.6 in x 4.6



## Cascadian Bowl

GSI

Light, tough, and totally recyclable, the GSI Cascadian Bowl is your go-to, all-purpose camp bowl. This durable, BPA-Free bowl won't hold odors or impart any tastes on tomorrow's dinner.

### Features:

Weight: 0.09 l

Material: Polypropylene

Major Dimension: 6 inch

Includes: 6" Bowl

Dimensions: 6.4 in x 6.4 in x 1.7



## Silicone Coffee Press -Grande + Standard

Jetboil

Jetboil's coffee press with a silicone ring guarantees the best brew in the backcountry or steam your favorite fish and vegetables with the Grande Coffee Press. Simply keep the basket up until your coffee has steeped, then press the basket down to trap the grounds. Save pack space with the detachable stem and basket, which stow easily in your cooking cup.

### Features:

Resistant silicone ring provides secure fit to eliminate cowboy coffee by keeping excess grounds from escaping during plunging process

Durable, high-temperature plastic and micro-filter reduces sediment in the pot and provides smooth, rich flavor

Stem detaches from the basket and easily stow in your cup

Two stem pieces included. One piece is used for the stem of the MiniMo & Stash and both pieces screwed together are used for the Sumo.

Compatible with: 1L Short & 1.8L

Weight 0.09375 lb | 0.042 kg

Dimensions 4.5 in x 7.2 in (11.4 cm x 18.3 cm)

Compatible With SUMO, Stash, MiniMo



## CrunchIt

Jetboil

Safe, fool-proof, and compliant with recycling standards, CrunchIt punctures JetPower (and certain other) butane fuel canisters, making them recycling bin ready. Because there's nothing less efficient than throwing things away.

### Features:

Lightweight, rugged stainless steel construction

Safely vents fuel prior to puncturing

Clips onto carabiner or key ring for convenience

Useful Jetboil toolkit with bottle opener and jet orifice wrench integrated into handle

Weight 0.0625 lb | 0.028 kg

Dimensions 1.4 in x 3 in (3.6 cm x 7.6 cm)

Compatible With SUMO, Stash, Zip, Flash, MightyMo, MicroMo, MiniMo, Joule





### Cosmo 350 Headlamp

**BD**

For multi-use camping, around the house, and outdoor adventures that require a simple light with both an all-purpose beam as well as night vision. This user has the need to run the lamp on alkaline batteries if caught away from a power source for a long backpacking trip.

#### Features:

Dual-Fuel: Power with three AAA Alkaline cells (included) or the rechargeable BD 1500 Li-ion battery and charger (purchased separately) for maximum flexibility

350 Lumen max output

Red LED night vision has dimming and strobe modes and is quickly activated with dual-button interface

Settings include dimming, strobe, red night-vision and lock mode

Multifaceted optical lens design

IPX8: Waterproof-Tested to operate at least 1.1 meters underwater for 30 minutes. If submerged, water may enter the battery compartment and it will still operate; it should be completely dried out after use in wet conditions

Integrated battery meter display shows % of power remaining

Digital lock mode feature safeguards against accidental use when stored in a pack or pocket

Display Weight 0.13

Max Distance (High) 64 m, (Medium) 45 m, (Low) 10 m

Weight Without Batteries 46 g



### Spot 400 Headlamp

**BD**

For a technical user who expects all-around performance and features out of their headlamp but still values a small size and compact package. This user has the need to run the lamp on alkaline batteries if caught away from a power source for a long expedition.

#### Features:

Dual-Fuel: Power with three AAA Alkaline cells (included) or the rechargeable BD 1500 Li-ion battery and charger (purchased separately) for maximum flexibility

400 Lumen max output

PowerTap™ Technology allows instant adjustment between max output and dimmed power

Integrated battery meter display shows % of power remaining

Settings include proximity and distance modes, dimming, strobe, red LED night-vision and lock mode

Brightness Memory allows you to turn the light on and off at a chosen brightness without reverting back to default setting

Red night vision has dimming and strobe modes and activates without cycling through the white mode

Multifaceted optical efficiency lens technology

IPX8: Waterproof-Tested to operate at least 1.1 meters underwater for 30 minutes. If submerged, water may enter the battery compartment and it will still operate; it should be completely dried out after use in wet conditions

Digital lock mode feature safeguards against accidental use when stored in a pack or pocket

Display Weight 0.09

Max Distance (High) 100 m, (Medium) 60 m, (Low) 12 m

Weight Without Batteries 44.5 g





## Storm 450 Headlamp

**BD**

For the technical consumer who wants the best, brightest, most waterproof, feature rich headlamp to use for fast paced, extreme environment activities. This user also has the need to run the lamp on alkaline batteries if caught away from a power source for a long expedition.

### Features:

Dual-Fuel: Power with three AAA Alkaline cells (included) or the rechargeable BD 1500 Li-ion battery and charger (purchased separately) for maximum flexibility

450 Lumen max output

IP67: Waterproof-Tested to operate at least 1.0 meters underwater for 30 minutes

PowerTap™ Technology allows instant transitioning between full and dimmed power

Brightness Memory allows you to turn the light on and off at a chosen brightness without reverting back to default setting

Settings include full strength in proximity and distance modes, dimming, strobe, red, green and blue night-vision, and lock mode

Multifaceted optical efficiency lens technology

Display Weight 0.14

Max Distance (High) 120 m, (Medium) 60 m, (Low) 12 m

Weight Without Batteries 59 g



## Moji Lantern

**BD**

Bright, lightweight and simple to use, the Moji is a fun, pocket-sized lantern ideal for campsites, vehicles and table-top illumination. Powered with BD's Dual Fuel technology, the lantern can run on alkaline batteries or with a rechargeable BD 1500 Li-ion battery (purchased separately) for ultimate versatility and compatibility.

### Features:

Dual-Fuel: Maximum flexibility to utilize either the rechargeable Lithium Ion BD 1500 battery or Alkaline cells (not included)

200 Lumen max output

Frosted globe creates even and bright usable light

Settings include dimming switch and strobe lighting to provide adjustable brightness for any occasion

Double-hook hang loop makes it easy to suspend in a tent

IPX 4 Stormproof: withstands rain and sleet from any angle

Display Weight 105.5 g (AAA), 100 g (BD1500)

Max Distance (High) 15 m, (Low) 2 m

Weight Without Batteries 72.5 g



## Moji+ Lantern

**BD**

Compact and lightweight, the Moji + is a lantern that can go anywhere, from family camping trips to big wall adventures. Using our two-button interface with 200 lumens of solid or strobing white light, a full rainbow spectrum of color, a relaxing campfire lighting mode and 4 magnets for quick, on the go attachment, the Moji + is the packable lantern to always keep with you. Powered with BD's Dual Fuel technology, the lantern can run on alkaline batteries or with a rechargeable BD 1500 Li-ion battery (purchased separately) for ultimate versatility and compatibility.

### Features:

Dual-Fuel: Maximum flexibility to utilize either the rechargeable Lithium Ion BD 1500 battery or Alkaline cells (not included)

200 Lumen max output

Frosted globe creates even and bright usable light

Two button interface is easy to use and provides adjustable brightness, full spectrum color and campfire light modes for just the right light in any occasion

Set continuous cycle through rainbow colors with strobe and solid color modes for light driven

campsite entertainment

Double-hook hang loop makes it easy to suspend in a tent

IPX 4 Stormproof: withstands rain and sleet from any angle

Display Weight 107 g (AAA), 101.5 g (BD1500)

Max Distance (High) 15 m

(Low) 2 m

Weight Without Batteries 74 g



## 1500 Battery & Charger

**BD**

The new BD 1500 Rechargeable Battery is compatible with all BD Dual Fuel headlamps and lanterns. The BD 1500 battery comes with a USB charger and is a 1500 mAh Li-ion rechargeable cell, giving you the freedom of reliable light you can use again and again while running, climbing and trekking in the mountains.

### Features:

Charger and cable included

1500 mAh Li-ion rechargeable battery cell

Compatible with Black Diamond Dual Fuel headlamps and lanterns



# PACKING AND LUGGAGE

## Backpacks

## Dry Bags



### Magnum 20 Pack

**BD**

With a 20-liter storage capacity, the Black Diamond Magnum 20 streamlines your necessities on all-day missions that require a step above the bare minimum essentials. With an internal stow pocket, and a trekking pole or ice axe loop supplemented by stretch-mesh side pockets and front web compression, storage options are many.

#### Features:

Contoured shoulder straps and OpenAir™ backpanel

Zippered panel opening and internal stash pocket

Easy-to-remove 20 mm webbing hipbelt

Bike light slot

Stretch-mesh side pockets, front web compression and storage

Hydration compatible



### Light Weight Dry Bags

**JR Gear**

Light weight dry bag built for budget conscious outdoor enthusiast. Fabricated with 75D Polyester with TPU backing. Fully welded seam for maximum waterproofing capability.

#### Features:

D-ring for easy attachment

Roll-top secured closure

Welded seam for maximum waterproofing

IPX4





### COMPRESSION DRY BAG

**JR Gear**

Extra-ordinary designed compression dry bag with vertical eVent® strip. Unlike normal bottom event design, vertical strip has an advantage superior in avoiding air clogged in the middle and cannot pass through the bottom.

#### Features:

30D Cordura® with silicon coating to increase the strength and durability

eVent fabric with PU backing

PU backing

Compressible

Magnetic closure

Taped seam for waterproofing

IPX4

## SHELTER AND SLEEP

Sleeping Bags

Mats

Pillows

Tents

Bivis

Footprint





### Helium, Down Sleeping Bag **JR Gear** -550, 750 and 1050

Down sleeping bags designed for trekking and hiking. Ranges from 250g to 1050g filling. Comfortably insulated from -17°F/-27°C to 16°F/-9°C.

#### Features:

20D nylon fabric  
Comfortable 3D contour mummy shape  
Double side zip provides convenience  
Inside anti-cold flap for better insulation  
Full length zipper provides ventilation

Special Mat pocket to secure a mat underneath  
Hood with drawcord.  
Compression stuff bag included  
Mesh bag included for storage friendly



### Insulated Poseidon **JR Gear**

New SOFT TOUCH stretchable fabric for the top of the market.

#### Features:

Estimated R-Value: ~ 5.2  
ALL-in-ONE valve  
Hydrolysis Resistant TPU (against moisture)  
30D Stretchable Fabric

Infrared Reflective Technology  
Repair kit included  
Stuff sack included  
100g/m2 and 133g/m2 PrimaLoft eco Synthetic



### Traverse Core™ **JR Gear**

Featuring extra thick 3.5”(8.9cm) insulation layer for ultimate support and comfort. Longitudinal designed air core provides better support over traditional vertical core because of the superior numbers of individual air chambers (No Touch sound anymore). Infrared Reflective Technology added sensible warmth. Excellent companion for sleeping on snow ground for its unbeatable thickness. Works with “Dry Pump” for quick inflation.

#### Features:

Estimated R-Value: ~ 3.0  
ALL-in-ONE valve  
Hydrolysis Resistant TPU (against moisture)  
75D nylon Hexagonal Ripstop

Infrared Reflective Technology  
Repair kit included  
Stuff sack included



### Microlite 300 **Vango**

The Vango Microlite 300 omega shaped sleeping bag within our Earth Collection is made from our recycled Polair® Active Eco lining and shell Fabric. It's designed using a combination of advanced technologies to keep you insulated whatever the conditions for the ultimate sleep. Made for year-round explorers looking for an ultra small pack size and weight, yet needing high thermal capacity from their bag. Look out for its 4T Eco Synthetic insulation, Tri-lateral Construction and Thermal Embrace which combine for the ultimate eco-friendly trekking pack.

#### Features:

Total Weight 1.06kg  
Packsize 26.0 x ø19.0cm  
Suggested Usage Min -2°  
Suggested Usage Max 15°  
Int Chest Width 78cm

Max User Height 190cm  
Int Foot Width 48cm  
Length 205cm  
Zip Side Left





### Features:

Weight: 1.65kg  
 Pack Size: 29.0 x ø20.0cm  
 Fill Type: Insulite Alpha  
 Suggested Usage Minimum: -2°  
 Suggested Usage Max: 20°

## Nitestar Alpha 250

**Vango**

The award-winning Vango Nitestar Alpha 250 has our Alpha insulation, combining excellent warmth properties with much-improved compressibility, it is smaller and lighter than ever before. Perfect for youth groups or your spring and summer adventures.

Int. Chest Width: 83cm  
 Max User Height: 190cm  
 Interior Foot Width: 48cm  
 Int. Length: 205cm  
 Zip Side: Left



### Features:

Weight: 1.45kg  
 Pack Size: 28.0 x ø20.0cm  
 Fill Type: Insulite Alpha  
 Suggested Usage Min.: -2°  
 Suggested Usage Max.: 20°

## Nitestar Alpha 250S Sleeping Bag

**Vango**

The award-winning Vango Nitestar Alpha 250 has our Alpha insulation, combining excellent warmth properties with much-improved compressibility, it is smaller and lighter than ever before. Perfect for youth groups or your spring and summer adventures.

Int Chest Width: 78cm  
 Max. User Height: 175cm  
 Int. Foot Width: 48cm  
 Int. Length: 190cm  
 Zip Size: Left



### Features:

Quality: Standard – 33 density  
 Colour: Black

## INSULATOR MAT 10mm

**E3**

The E3 Gear Insulator Mat is a simple closed cell foam sleeping mat to provide padding and insulation from the ground.

Dimensions: 200cm x 50cm x 10mm thick



### Features:

Weight: 235g  
 Max Dimensions: L56.0 x H8.8 x W13.0cm  
 Closed Cell Foam Construction - Provides insulation, flexibility and is waterproof  
 Dimple Shaped Design - Soft, durable and provides support including springback shock absorption

## Thermatrek Mattress

**Vango**

The Vango ThermaTrek sleep mat is perfect for a warm and comfortable sleep to ensure you enjoy your adventures the next day. The new Closed Cell construction retains heat and is highly waterproof while a coated aluminium base provides added insulation to fend off cold nights. An easy folding structure makes transportation simple. Stay warm and dry wherever you go and sleep better with Vango.

Compact Folding Design - Easy to fold and pack away  
 Aluminium Base Coating - Coating on the base of the mat provides extra thermal insulation for the user  
 Elastic Straps - For securing the sleep mat for easy



### Features:

Size: 12"x16"x4" / 30x40x10cm

## Hood Pillow

**JR Gear**

Self inflatable pillow made for hood of sleeping bags. Stretchable soft touch fabric. The new All-in-ONE Type II valve makes this pillow super easy for inflation and deflation.

Weight: 6 oz / 170g



### Helvellyn 200

**Vango**

The Vango Helvellyn 200 2-man tent is ideal for year-round adventures, benefiting from a self-supporting, semi-geodesic construction, that provides excellent stability, even in challenging conditions. The Helvellyn has a great strength to weight ratio. The multi-functional porch can be opened in different ways to provide the optimum shelter from the elements. Inner door vents ensure air flow for ventilation, whilst keeping bugs out. This is an ideal tent for wild camping and exploring new areas.

#### Features:

Total Weight 2.8kg  
Packsize 46.0 x ø16.0cm

Pitching Time 10 mins  
Capacity 2 Person Tent

### Helvellyn 300

**Vango**

The Vango Helvellyn 300 3-man tent is ideal for year-round adventures, benefiting from a self-supporting, semi-geodesic construction, that provides excellent stability, even in challenging conditions. The Helvellyn has a great strength to weight ratio. The multi-functional porch can be opened in different ways to provide the optimum shelter from the elements. Inner door vents ensure air flow for ventilation, whilst keeping bugs out. This is an ideal tent for wild camping and exploring new areas.

#### Features:

Total Weight 3.52kg  
Packsize 48.0 x ø18.0cm

Pitching Time 10 mins  
Capacity 3 Person Tent

### Nevis 100

**Vango**

The Vango Nevis 100 1-man tent is compact and light weight with good head height and is quick to pitch and is all wrapped up into a very light, small pack size. Features include, PowerLite Alloy poles, door vent and TBS II Tension Brand System, adding strength and stability to make your trip fun and carefree.

#### Features:

Total Weight 1.7kg  
Packsize 46.0 x ø14.0cm

Pitching Time 5 mins  
Capacity 1 Person Tent

### Helm Compact 1 Tent

**Wild Country**

The Helm Compact 1 is a remarkably spacious 1 person tent that packs down to just 30cm x 17cm. The 3 season, 1 person tent is lightweight and compact that is easy to pitch and simple to pack away, making it perfect for backpacking trips and youth expeditions. A good choice for medium-duration backpacking trips where more space may be needed.

#### Features:

Sleeps: 1  
Packed weight: 1.97Kg (4lb 5oz)  
Packed size: 30 x 17cm  
Number of porches: 1  
Number of doors: 1  
Season: 3 season  
Pitch: Fly and inner pitch together

Flysheet: 68d 210T R/S PU 4000mm FR WR C6  
Inner: 68d 210T R/S BR / FR  
Groundsheet: 68d 190t PU 5000mm FR WR C6  
Poles: 8.5mm WC Superflex Alloy  
Pegs: 10 x Alloy 'V' Angle  
Guylines: 4 x Yellow Reflective

### Helm Compact 2 Tent

**Wild Country**

The Helm Compact 2's small pack size of only 32cm x 21cm makes it easy and versatile for compact packing. It's a good choice for medium-duration backpacking trips where more space is preferred. Trail Magazine Best Value Award August 2021 – 'Sturdy, practical and well priced, this is an excellent tent for wild camping in the UK hills'.

#### Features:

Sleeps: 2  
Packed weight: 2.35Kg (5lb 3oz)  
Packed size: 32cm x 21cm  
Season: 3 season  
Number of porches: 2  
Number of doors: 2  
Flysheet: 68d 210T R/S PU 4000mm FR WR C6

Inner: 68d 210T R/S BR / FR  
Groundsheet: 68d 190t PU 5000mm FR WR C6  
Poles: 8.5mm Superflex Alloy  
Pegs: 10 x Alloy 'V' Angle  
Guylines: 4 x Yellow Reflective  
Pitch type: Fly and inner pitch together





### Helm Compact 3 Tent **Wild Country**

The Helm Compact 3 is a compact tent that's spacious enough for three people or perfect for two people looking for more space. With a compact pack size of just 32cm x 24cm, it's easy to pack into rucksacks or panniers. A great choice for youth expeditions.

#### Features:

Sleeps: 3  
 Packed weight: 2.95Kg (6lb 8oz)  
 Packed size: 30 x 24cm  
 Number of doors: 2  
 Number of porches: 2  
 Season: 3 season  
 Flysheet: 68d 210T R/S PU 4000mm FR WR C6

Inner: 68d 210T R/S BR / FR  
 Groundsheet: 68d 190t PU 5000mm FR WR C6  
 Poles: 8.5mm Superflex Alloy  
 Pegs: 14 x Alloy 'V' Angle  
 Guylines: 6 x Yellow Reflective  
 Pitch Type: Fly and inner pitch together



### Trisar 2D **Wild Country**

Based on the iconic Terra Nova Quasar, the Trisar 2D is a fantastic 2 person, geodesic tent, with 2 porches and 2 doors, making it ideal for year-round backpacking trips. The Trisar 2D is based on the iconic Terra Nova Quasar tent. If you're looking for a tried and tested tent for year-round adventures and expeditions, then this is an ideal option.

#### Features:

Sleeps: 2  
 Packed weight: 3.6Kg (7lb 15oz)  
 Packed size: 45 x 19cm  
 Number of porches: 2  
 Number of doors: 2  
 Season: 4 season  
 Flysheet Stormtex 68D Polyester Ripstop PU

4000mm  
 Inner 68D Polyester Ripstop  
 Groundsheet Aqua Stop 68D PU 5000mm  
 Poles 8.5mm Superflex Alloy  
 Pegs 18 x Alloy 'V' Angle  
 Guylines 9 x Yellow Reflective



### Trisar 2 Tent **Wild Country**

The Trisar 2 is a lightweight and spacious, 2 person tent that's designed for year-round backpacking trips. It is also well suited for group, Duke of Edinburgh or Scout use in more exposed conditions.

#### Features:

Sleeps: 2  
 Packed weight: 2.7kg  
 Packed size: 42x15cm  
 Number of porches: 2  
 Number of doors: 1  
 Season: 4 season  
 Flysheet: 68d 210T R/S PU 4000mm FR WR C6

Inner: 68d 210T R/S BR / FR  
 Groundsheet: 68d 190t PU 5000mm FR WR C6  
 Poles: 8.5mm Superflex Alloy  
 Pegs: 18 x Alloy 'V' Angle  
 Guylines: 9 x Yellow Reflective  
 Pitch: Inner pitch first



### Trisar 2 Tent **Terra Nova**

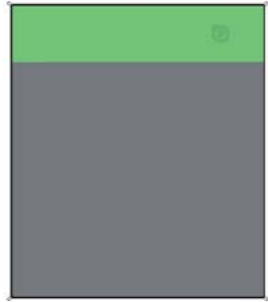
A waterproof sleeping bag cover/bivi bag designed as an essential piece of survival equipment for the great outdoors. This bivi is great value and can be used as a normal bivi bag or in conjunction with a Tarp. You can simply keep it in your pack every time you go out, in case of emergency.

#### Features:

Simple drawstring closure.  
 Waterproof and breathable.  
 Small pack size.  
 Low weight.

Terra Nova high-quality dusk fabric.  
 Weight 340g (12oz)  
 Packed size 21cm x 11cm  
 Product size 215cm x 74cm





### Ultra Lite Groundsheet

**JR Gear**

The JR Gear Ultra Lite Groundsheet is a super Light and compact groundsheet with a siliconized surface that stops moisture and stains.

#### Features:

Super Light and compact  
High tensile strength 40D nylon  
Siliconized surface stops moisture and stains  
Anchoring loops at four corners

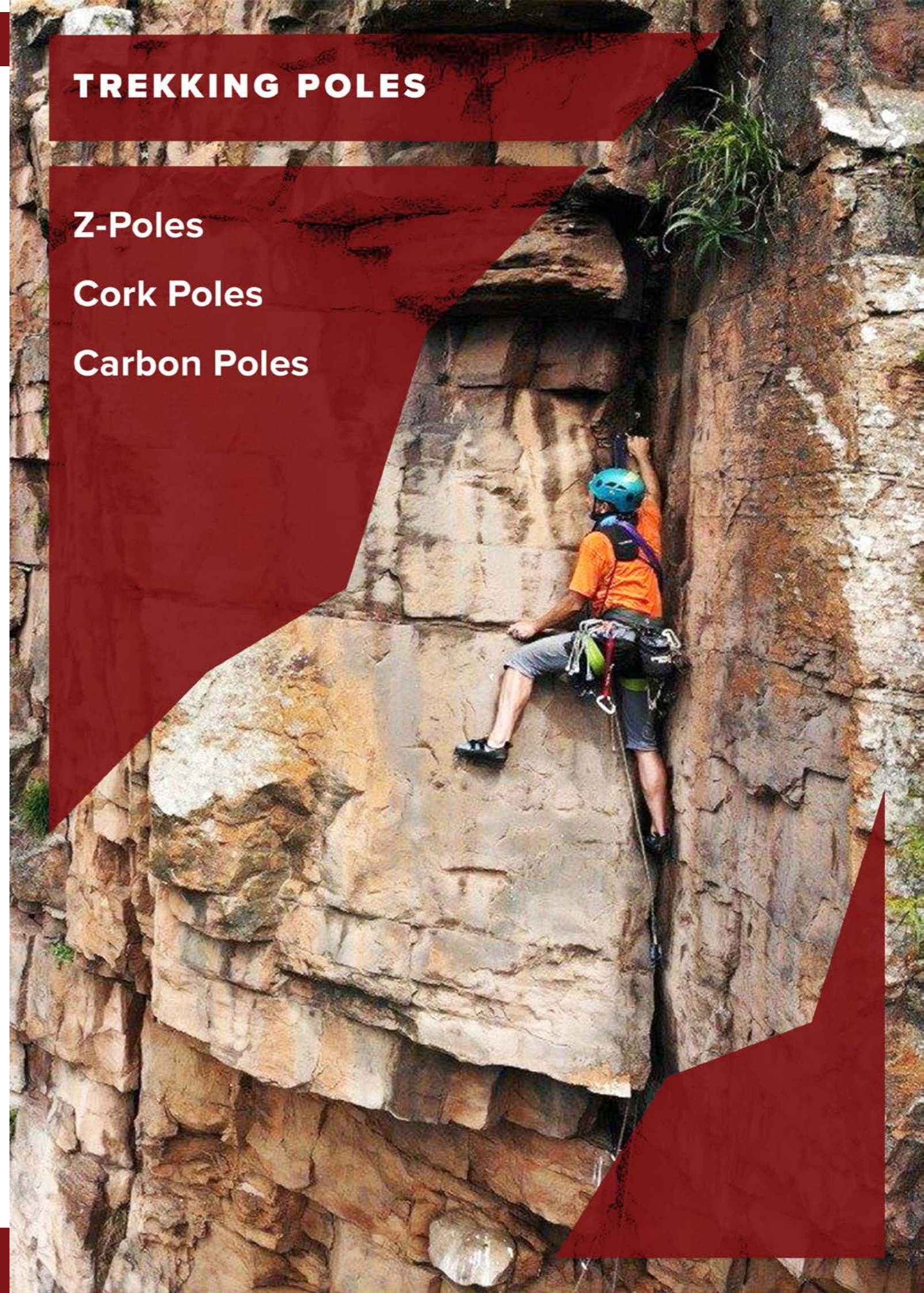
Integrated stuff bag  
Dimensions: 220x145cm / 87"x57" (R)  
Average weight: 235g / 8.3 oz  
Packed size: ø8x18cm / ø3.2"x7.1"

## TREKKING POLES

Z-Poles

Cork Poles

Carbon Poles







### Distance FLZ Trekking/ Running Poles

BD

Combining the amazing packability of a Z-Pole with FlickLock® adjustability, the Distance FLZ is an excellent choice for trail runs, steep scrambles and long hikes. The Distance FLZ utilizes our lightweight and supportive Distance strap that's breathable and moisture wicking, making the Distance FLZ a durable, lightweight trekking machine ready for adventure.

#### Features:

Improved joint support and stiffness

Lightweight EVA foam grip and grip extension with breathable, moisture wicking strap made from recycled materials

Three-section foldable shaft with speed cone deployment and FlickLock® adjustability

Aluminum construction

Interchangeable, non-scarring rubber Tech Tips and carbide Tech Tips

Removable low-profile baskets for versatility

Z-Pole Snow Basket compatible

Available in 95-110, 110-125, and 125-140cm lengths



### Alpine Carbon Cork Trekking Poles - Men's

BD

Our 100% carbon fiber trekking pole built to withstand four-season alpine terrain now features our newly redesigned FlickLock® Pro adjustable technology, which is lighter, more ergonomic and easier to use. The Carbon Cork's namesake grip has also been updated with a soft touch grip top to provide a comfy feel, and the new solution strap draws from our innovative harness technology for a more secure fit.

#### Features:

100% carbon fiber shafts

Soft-touch ergonomic grip top with 100% natural cork grip and EVA foam grip extension

FlickLock® Pro adjustability— featuring forged aluminum construction

Solution strap for premium performance

Interchangeable tech tip compatible with carbide tech tips included

Collapsed Length: 61 cm (24 in)

Usable Length: 100-130 cm (39-51 in)

Weight Per Pair: 486 g ( 1 lb 1.1 oz)



### Trail Ergo Cork Trekking Poles

BD

The Black Diamond Trail Cork is built for 4-season versatility and expertly balances comfort, features and durability. Our interchangeable carbide Tech Tips are easily swapped for our Rubber Tech Tips (sold separately) to accommodate changing trail surfaces and we've included both trekking and snow baskets for 4 season versatility.

#### Features:

7075 Aluminum shafts

Soft-touch ergonomic grip top with 100% natural cork grip and EVA foam grip extension

Fusion comfort strap for premium support

FlickLock® adjustability

Interchangeable tech tip compatible with carbide tech tips included

4 season flex tips with both trekking and snow baskets included

Collapsed Length: 62 cm (25 in)

Usable Length: 100-140 cm (39-55 in)

Weight Per Pair: 486 g ( 1 lb 1.1 oz)



### Alpine Carbon Cork Trekking Poles - Women's

BD

Our 100% carbon fiber trekking pole built to withstand four-season alpine terrain now features our newly redesigned FlickLock® Pro adjustable technology, which is lighter, more ergonomic and easier to use. The Carbon Cork's namesake grip has also been updated with a soft touch grip top to provide a comfy feel, and the new solution strap draws from our innovative harness technology for a more secure fit.

#### Features:

100% carbon fiber shafts

Soft-touch ergonomic grip top with 100% natural cork grip and EVA foam grip extension

FlickLock® Pro adjustability— featuring forged aluminum construction

Solution strap for premium performance

Interchangeable tech tip compatible with carbide tech tips included

Collapsed Length: 61 cm (24 in)

Usable Length: 100-130 cm (39-51 in)

Weight Per Pair: 486 g ( 1 lb 1.1 oz)





### Trail Explorer 3 Trekking Poles **BD**

The Black Diamond Trail Explorer trekking poles offer simple support for day hikes and backpacking adventures. Available in two and three-section options these poles feature FlickLock® adjustability for fast and secure length adjustments when you encounter variable terrain.

#### Features:

Sold in Pairs  
Three-section aluminum shaft  
Dual FlickLock® adjustability  
Low profile trekking baskets

Comfortable webbing strap  
Collapsed Length: 58.5 cm (23 in)  
Usable Length: 58.5-130 cm (25-51 in)  
Weight Per Pair: 531 g (18.7 oz)



### Trail Trekking Poles **BD**

Balancing comfort, features and reliability, the Trail features an updated EVA foam grip for added comfort and our fusion comfort strap for added security and better handling. With both interchangeable tips and baskets, the Trail is an amazingly versatile pole for any terrain or season.

#### Features:

7075 Aluminum shafts  
Soft-touch ergonomic grip top with EVA foam grip and grip extension  
Fusion comfort strap for premium support  
FlickLock® adjustability  
Interchangeable tech tip compatible with carbide tech tips included

4 season flex tips with both trekking and snow baskets included  
Collapsed Length: 64cm (25 in)  
Usable Length: 100-140cm (39-55 in)  
Weight Per Pair: 486 g (1 lb 1 oz)



### Basha Folding Trek Pole - Single **Vango**

The new Vango Basha walking pole is a light and packable piece of kit for hikers. It's foldable design allows for easy transportation, collapsing down to 38cm. Extendable length from 117cm to 135cm and Quicklock technology make this pole ideal for all users.

#### Features:

Shock absorbing system in the handle  
Strong, lightweight alloy construction  
Foldable and Compact Design allowing for easy transportation collapsing down to 48cm in length

Tungsten Tip - Good Grip  
Aluminium Quick Lock mechanism ensures fast, easy locking of the poles  
Extendable length: 117cm - 135cm



### Camino - Single **Vango**

Made of a robust alloy 7075 material, the Camino walking pole will see you through the toughest treks. The QuickLock enclosure reduces the pole down to a portable 67cm when not in use, while the anti-shock foam handle helps to reduce stress on your legs, knees, ankles and feet throughout your trek.

#### Features:

Shock absorbing system in the handle  
Strong, lightweight alloy construction  
Tungsten Tip - Good Grip  
Quick Lock mechanism ensures fast, easy locking of the poles

Extendable length: 67cm - 135cm  
New and Updated - Extra long foam handle with microfibre lined strap - Allows multiple hand positions for different ascent styles